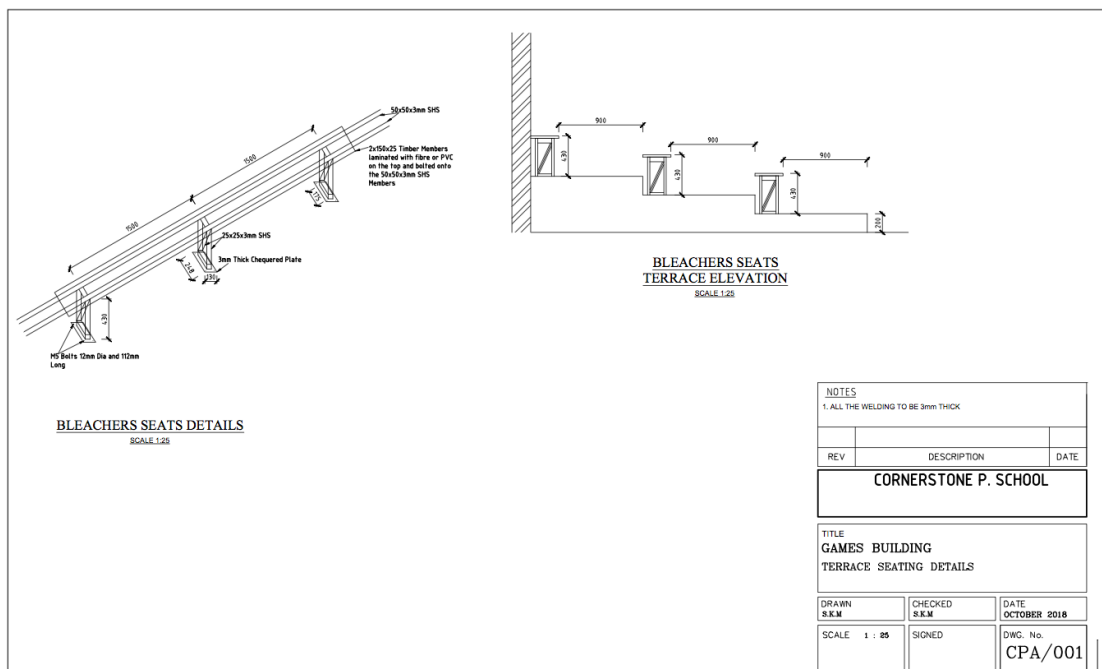




Cornerstone Multipurpose Auditorium Bleacher Seating Need

A multipurpose auditorium has been constructed on site at Cornerstone Preparatory Academy as part of our 2016-2021 5-yr Strategic Plan. Interior finishes that have either been completed or underway include high-intensity LED lights, flooring with lines, and basketball goals. Four classrooms were recently built and furnished, allowing the facility to also be used for community programs, vocational training, and PE classes. We only have one need remaining – the bleacher seating. Please refer to the engineering drawing and breakdown of costs below.



- 1) Timber (dry and planed) 3350 linear feet @ \$.94 /ft. = \$3,149
- 2) Transport of timber to Nairobi to apply fiberglass molding at factory = \$198
- 3) Transport of finished product back to Cornerstone = \$198
- 4) Bolts/nuts = \$209
- 5) Installation (labor) = \$297
- 6) Steel frames and brackets 211 pcs. = \$10,879
(includes transport + anchoring into floor by manufacturer per specification)
- 7) Fiberglass molding material cost = \$5912

Total = \$20,842