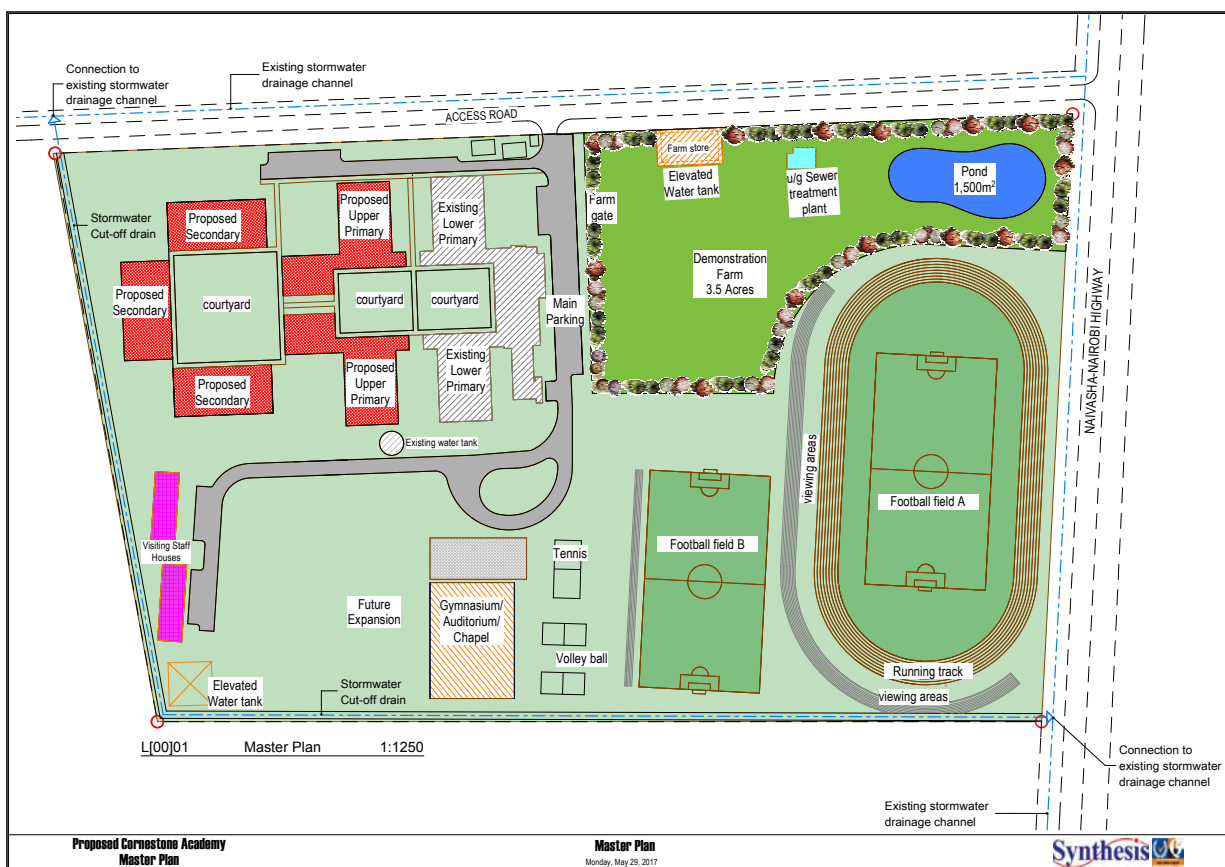




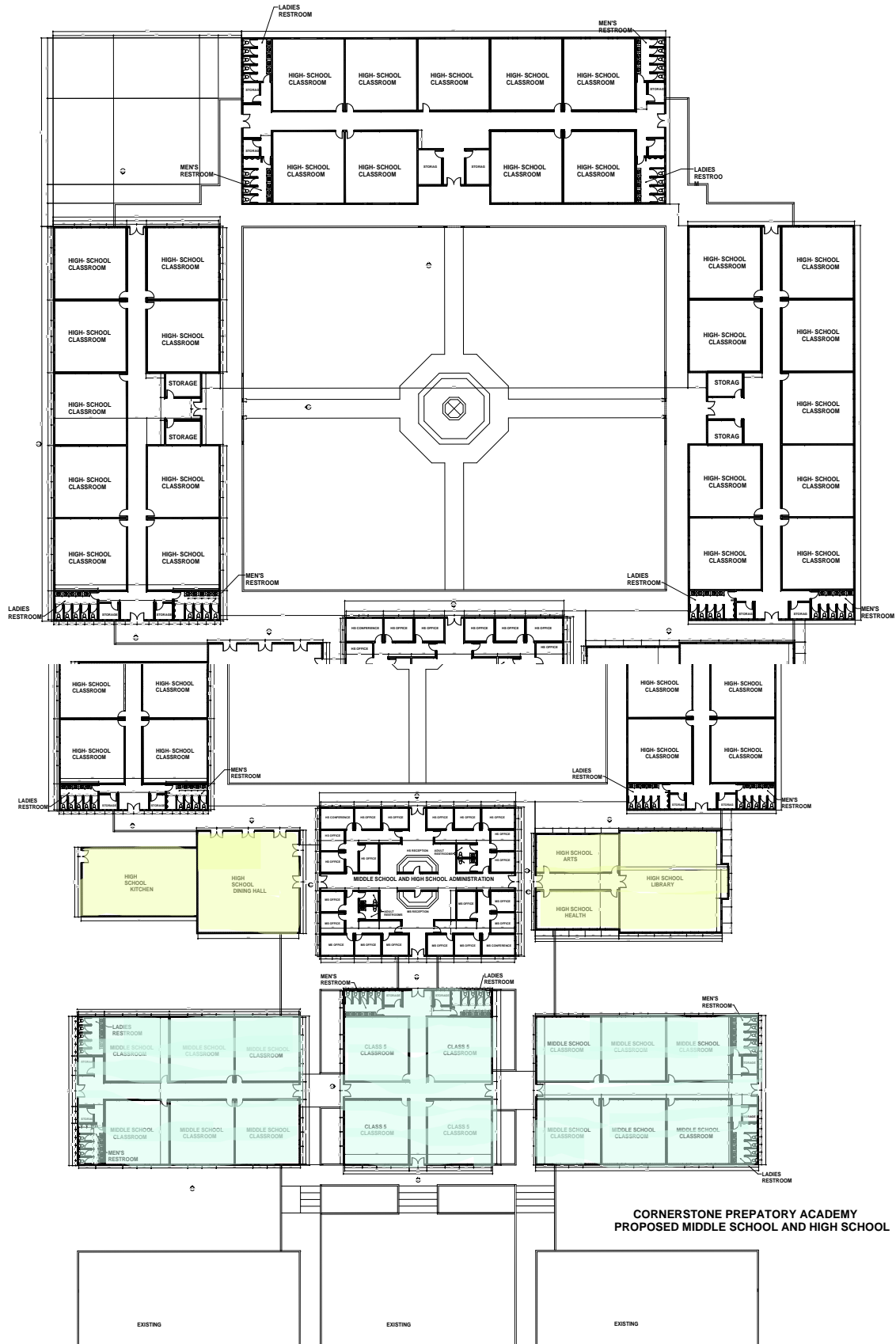
Cornerstone Middle/High School Construction

2021 Update:

In 2016, our Strategic Plan called for the eventual construction of middle and high school blocks so our older students could continue to receive the best education possible in Kenya. We had an architect design a master plan including space for these facilities (see buildings in **red** below). N.B. (upper primary = middle; secondary = high school). When completed, our capacity will increase to 1000 students total.



Design layouts on the next page include 43 new classrooms, an admin block, dining hall, kitchen, library, arts building, and health center. These plans were done pro-bono by US Board of Trustees member Ron Hamilton. Yellow highlights indicate already completed construction/green highlights show structures to be built in 2022.



CORNERSTONE PREPATORY ACADEMY
PROPOSED MIDDLE SCHOOL AND HIGH SCHOOL

Our Project by the Numbers...

Total estimated cost of construction is 76,000 sq. ft x \$35/ sq. ft. = \$2.66M

Funds raised as of Dec 2021 = \$863,000 (32% of total)

Kitchen, dining hall, and library for middle school (MS) and high school (HS) were funded by The Lennox Foundation via grants of \$96,000 and \$98,000 and were built already (yellow highlighted in layouts above).

Health center and arts center were funded and built in 2021 (yellow highlighted in layouts).

2021 year-end \$175,000 match campaign hopes to raise remaining \$350,000 for middle school blocks (green highlighted in layouts)

Total funds raised if \$350,000 year-end match met: \$1,213,000 (46% of total)

Remaining amount to raise if match met = \$1,447,000

Ways to give to construction after the match:

- A. 100 sq. ft. of finished middle or high school construction @ \$35/sq. ft. = \$3,500
- B. (27) HS Classrooms = 1,000 sq. ft. x \$35/sq. ft. = \$35,000 for each classroom

2 HS Classrooms with hallway between = 2,296 sq. ft. x \$35/sq. ft. = \$80,360

2 HS classroom block with boys' and girl' bathrooms, 2 storerooms, and hallway = 3,177 sq. ft. x \$35/sq. ft. = \$112,000

4 -HS classroom block with boys' and girls' bathrooms, 2 storerooms, and hallways = 5,460 sq. ft. x \$35/sq. ft. = \$191,000
- C. (10) Admin offices = 137 sq. ft. x \$35/ sq. ft. = \$4,795 each
- D. (2) Admin office blocks (5 offices, men's and women's bathrooms, hallways) = 1,125 sq. ft. x \$35/ sq. ft. = \$39,375
- E. (2) MS or HS Conference Rooms = 167 sq. ft. x \$35/ sq. ft. = \$5,845 each
- F. (2) MS or HS Reception Areas = 156 sq. ft. x \$35/ sq. ft. = \$5,460 each
- G. Outdoor covered passageways (with lighting, rough stone floor, columns, roofs) = 9,200 sq. ft. x \$18/ sq. ft. = \$165,600

H. Water tower with 20,000L tank, meter, plumbing, and pump = \$30,000 (funded!)

I. Architectural/ engineering plans and construction supervision in Kenya = 7% x
2.66M = \$186,200

Thank you and God bless you for your generosity in helping us grow our total enrollment at Cornerstone to 1000 students over the next 5 years as we build these necessary facilities.

Dr. Bob and Julie Mendonsa
Naomi's Village | Hope Begins When a Child Belongs
(972) 979 - 4836 | (214) 763 - 8311

To Contribute:

Give by check (no fees):

Naomi's Village, Inc.
P.O. Box 270057
Flower Mound, TX 75027-0057



Give via NV Website:

naomisvillage.org/currentneeds

Give Stock Gifts (no fees):

Agent:

Vanguard
455 Devon Park Drive Wayne, PA 19087-1815
800.345.1344

DTC#: 0062

Account#: 17690887

Account Name: Naomi's Village

