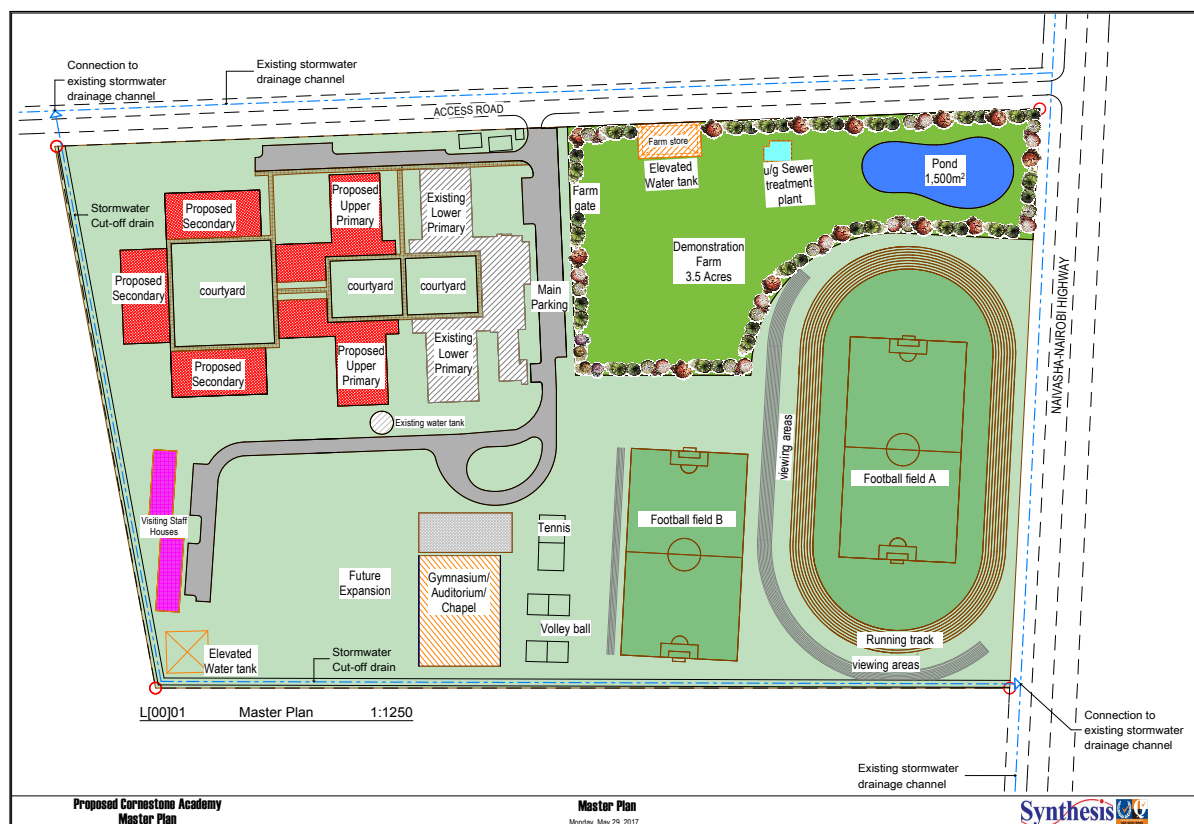


Cornerstone Preparatory Academy Middle/High School Block Additions

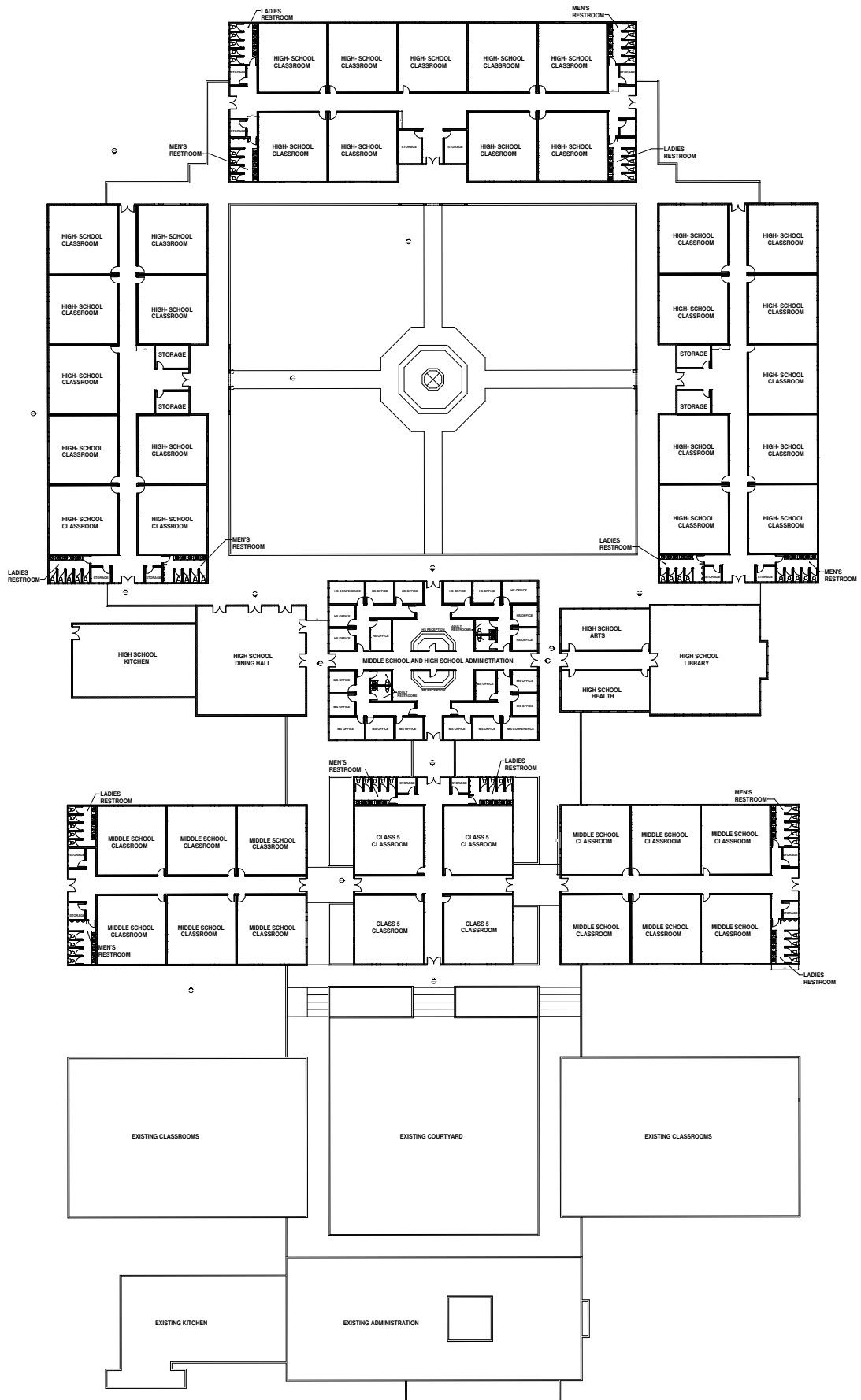
In 2016, our 5-year Strategic Plan called for the eventual construction of middle and high school blocks in order to allow our older students to continue to receive the best education possible in Kenya. We took steps back then to have an architect draw up a master plan layout creating a space for these facilities (see buildings in red). NB (upper primary = middle; secondary = high school)

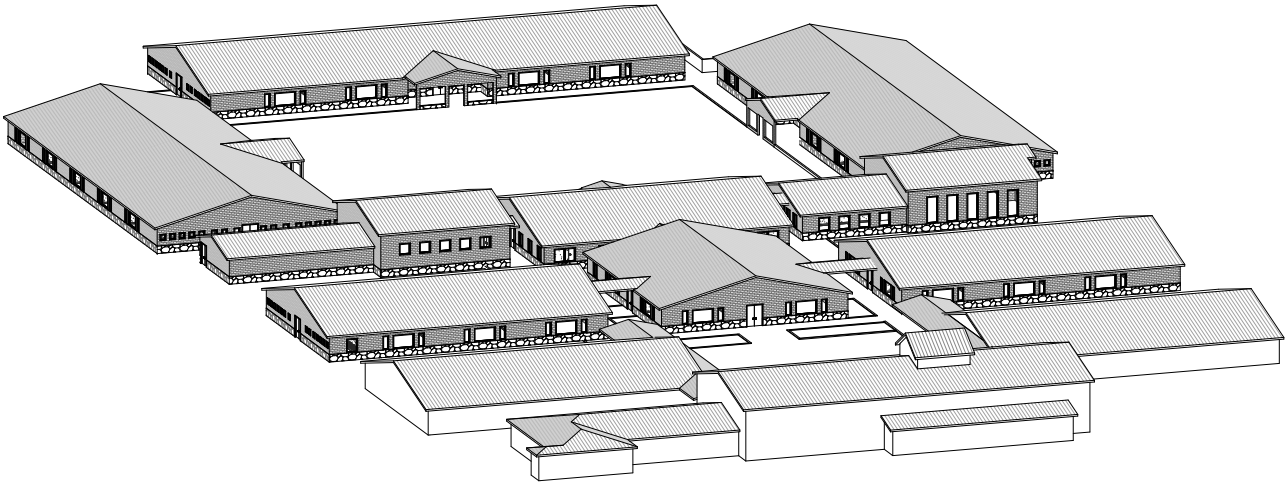


We now have 220 K-8 students using 10 classrooms. This leaves us without facilities to educate our high school students, no free rooms for rising students from LEAP Preschool, and inadequate space to allow specialized teaching of middle school students. We must act now to expand our infrastructure.

*Architect Ron Hamilton has done design drawings for the planned facilities pro bono (see following pages)

*Price Modern, LLC in Baltimore, MD is donating \$100K in new school furnishings + shipping costs to Kenya.





Total Square Feet of New Construction: 76,109 sq. ft.

Cost Per Sq. Ft. for Construction of buildings: \$30

Total Est. Cost for Construction of Middle and High School $76,109 \times \$30 =$ **\$2,283,270**

We plan to initiate construction once we have architectural and engineering drawings, approval of drawings, environmental impact assessment, and adequate funds raised. Ideally, this would be by spring 2020, since construction is expected to take 18-24 mos.

How You Can Help:

Please contribute to help make this next phase of our vision a reality in one of the following ways:

- Online by credit card/ EFT: <https://naomisvillage.kindful.com/?campaign=1016978>
- By mailing your contribution to: Naomi's Village, Inc.
PO Box 270057
Flower Mound, TX 75027-0057
- By donating stock - please contact Kim Ramsey at (972) 979-4836

Go to this link to watch a 90-second video! <https://vimeo.com/333413594/a6aecaf62a>